

# HUNTERS®

HERE TO GET *you* THERE



## Lansdown House

Denmark Road, SE5 9EY

£1,895 Per Calendar Month



Recently refurbished two double bedroom apartment with separate reception and panoramic views of the London skyline.

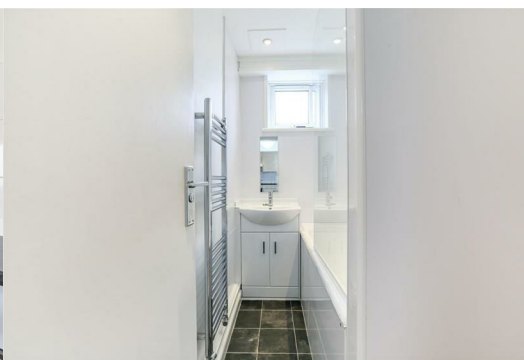
Situated in the heart of Zone 2, this well proportioned property has recently been refurbished throughout and benefits from two good sized double bedrooms, spacious separate reception which leads on to a private south facing balcony.

There is a modern fitted kitchen and contemporary bathroom with bath and shower fitting. There are stunning panoramic views of the London skyline.

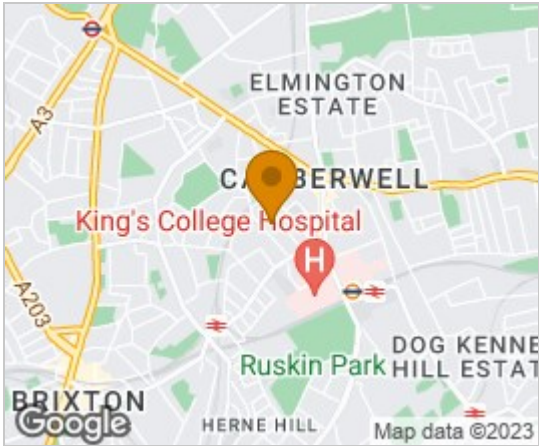
Minutes from Kings College Hospital, excellent transport links with easy access to the West End and City and a vast range of bars restaurants and local amenities.

Comes part furnished and is available now.

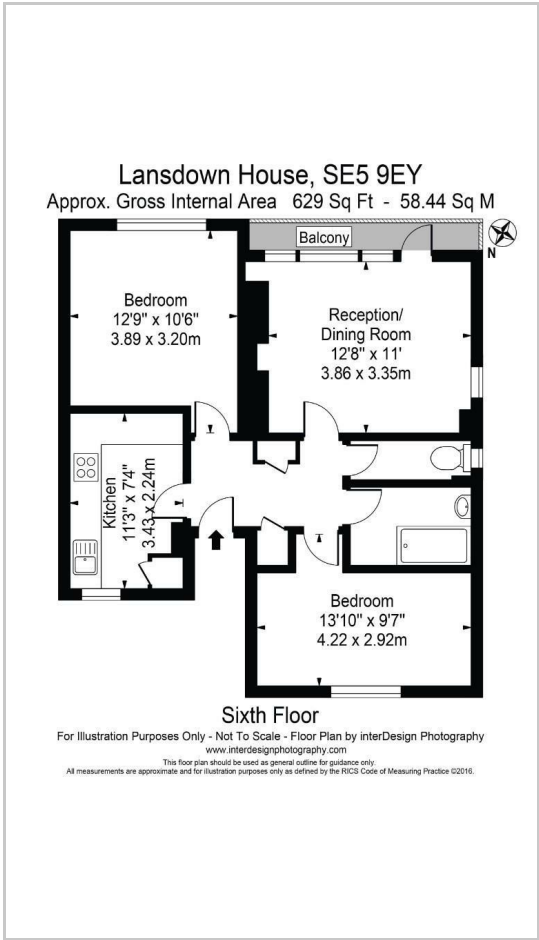
SEE VIDEO TOUR.



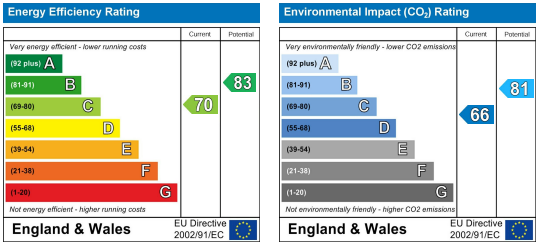
Area Map



Floor Plans



Energy Efficiency Graph



These particulars are intended to give a fair and reliable description of the property but no responsibility for any inaccuracy or error can be accepted and do not constitute an offer or contract. We have not tested any services or appliances (including central heating if fitted) referred to in these particulars and the purchasers are advised to satisfy themselves as to the working order and condition. If a property is unoccupied at any time there may be reconnection charges for any switched off/disconnected or drained services or appliances - All measurements are approximate.

**THINKING OF SELLING?** If you are thinking of selling your home or just curious to discover the value of your property, Hunters would be pleased to provide free, no obligation sales and marketing advice. Even if your home is outside the area covered by our local offices we can arrange a Market Appraisal through our national network of Hunters estate agents.